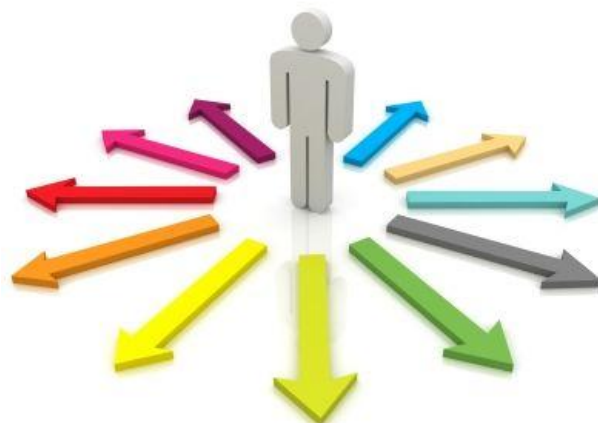


**Blessed Hugh Faringdon
Catholic School
& Sixth Form Centre**



'True Teaching'

**GCSE Key Stage 4
Curriculum and Options
Booklet
2025 – 2027**



The Blessed Hugh Faringdon way



Belief-in God
in ourselves
in each other



Happiness-in our work
in our play
in our goals



Family –family and school together
school as family
family of God



Caring-for ourselves
for each other
for our world



Service-in leadership
in our career destinations
in generosity of spirit



GCSE Key Stage 4 KS4 Courses and Options 2025 - 2027

Contents

	Page
Introduction by Dr Uttley, Headmaster	4
Key Stage 4 Pathways.....	6
Core Compulsory Courses.....	8
KS4 Curriculum Pathways - table	8
The Curriculum – Years 10 and 11 – Key Stage 4.....	11
How Do I Choose?.....	12
Course Details	
Religious Education	13
English	14
Mathematics	15
Biology	17
Chemistry.....	18
Physics	19
Combined Science Trilogy.....	20
Art and Design	21
Business	23
BTEC First Enterprise.....	24
Computer Science	25
Design and Technology	27
Drama	28
Film Studies	30
Food Preparation and Nutrition.....	31
French.....	32
Geography	36
BTEC Health and Social Care Level 2	37
History.....	38
Music	40
Personal and Social Development.....	41
Physical Education	42
Polish.....	43
Sociology	45
Spanish.....	46
Cambridge National in Sport Studies Level 1/2	50
Statistics	51
The Sixth Form	53

Introduction

February 2025

Dear Parents and Pupils,

In this booklet, you will find details of the options available to your child as they come to the end of Year 9 and are ready to enter Year 10 and start their Key Stage 4 courses.

We seek to ensure that all students are placed on the right courses and are studying options that are most appropriate, allowing them to meet and indeed exceed their potential and prepare for a future career path. Their success at Key Stage 4 will enable our students to have as many possibilities open to them for their continued learning and future careers.

Often students find choosing subjects challenging, if this is the case, we encourage you to consider the following:

- Ask for advice and direction from the relevant Subject Leaders.
- Clarify if this is a subject you enjoy and achieve well in.
- Don't choose a subject just because your friends have.
- Talk to Miss Gittings about career choices if you are not sure – this will help you choose the right course.
- Consider post 16 and post 18 options. If, for example, you want to be a doctor then you need to know now about what GCSE and A level subjects to follow, and the grades expected at GCSE and A level.
- If there is a particular A Level or Level 3 programme of study you wish to follow in the future, please ensure you meet the entry requirements at GCSE. For example, to study Maths A level you will need at least a Grade 7 at GCSE.

School performance and accountability measures

The school must ensure that the subject combinations and pathways followed by students meet certain criteria and accountability measures set out by national Government. These include:

1. "Progress 8", i.e., pupils making progress across 8 subjects – 5 of which must be EBacc subjects and then 3 others. This will be expressed as a decimal, e.g., a score of +0.5 means that pupils are gaining on average a half grade higher than expected at GCSE.
2. "Attainment 8", i.e., attainment across 8 subjects – the average grade all pupils achieve, e.g., 5.
3. The percentage of pupils achieving a Grade 5 or higher in English Language or Literature and Maths.
4. The percentage of pupils achieving passes in the EBacc subjects – English, Science, Maths, a humanities subject (Geography or History) and a language.

The EBacc subjects are as follows: -

- English Language
- Mathematics
- Physics, Chemistry and Biology (known as Separate Science – 3 GCSEs)
or
Trilogy Science (a combined GCSE Award – 2 GCSEs)
- A language, e.g., French, Spanish or Polish
- History or Geography

The EBacc is particularly important for students who wish to attend a Russell Group University (the 24 elite Universities in the UK) who need these subjects at GCSE level. The Government set an ambition to see more students studying the EBacc subject combination at GCSE. We have adapted our curriculum offer to provide the best stepping stone for keeping students' post-16 options open to future study and future careers.

We have redesigned our Key Stage 4 Curriculum to incorporate a greater number of students achieving the EBacc. We recognise the importance of also ensuring that students' study the right courses for their academic ability and skillset. Students have therefore been carefully selected to follow individual Pathways of study for their Key Stage 4 Curriculum. You will have been informed of your designated pathway, prior to the options process. Information regarding this, along with the subjects available in each Pathway is outlined below.

I would like to take this opportunity to wish all of our students' great success in their subject choices and their future pursuits.

Yours sincerely

A handwritten signature in black ink that reads "Simon R. Uttley". The signature is written in a cursive style with a long horizontal flourish underneath the name.

Dr Simon Uttley KCHS FRSA
Headmaster

Key Stage 4 Pathways

Pathway 1 Core, EBacc and Optional Subjects

- All students following this pathway will study the **compulsory core courses**.

Science consists of the **Separate Science award** (3 GCSEs- Biology, Chemistry and Physics). Or **Trilogy Science** (2 GCSEs - combined Biology, Chemistry & Physics). *

- All students will study a **language** (French, Spanish or Polish) **
- All students will be required to choose either **History or Geography** GCSE.
- All students will choose **2 options** from the open option subjects.

Pathway 2 Core and Optional Subjects

- All students following this pathway will study the **compulsory core courses**.

Science consists of the **Separate Science award** (3 GCSEs - Biology, Chemistry and Physics). Or **Trilogy Science** (2 GCSEs - combined Biology, Chemistry & Physics). *

- All students will take an option from the **History, Geography or a language** (French, Spanish or Polish) **
- Students will choose **3 option** from the open option subjects.

Students may opt to follow the full EBacc, as above in the Pathway 1 model.

Pathway 3 Core, optional Subjects and Alternative Curriculum Pathway

- All students following this pathway would study the **compulsory core courses**.

Science consists of the **Trilogy Science** (2 GCSEs - combined Biology, Chemistry & Physics). There will be the option for students to study 'Entry Level' core qualifications.

- All students will choose **3 option subjects**.
- Students study an **ASDAN course**.

Bespoke Curriculum

- This pathway is available to identified students who have demonstrated that they are best suited to small group provision with a degree of flexibility.
- Some students will study Functional Maths, Functional English, small group Entry Level RE and attend Science lessons with a view to completing the Entry Level qualification.
- Some students will complete the Unit Award Scheme completing individually certificated units selected from a wide range of topics to reflect their strengths and interests.
- Subject to discussion, some students may study one or two GCSEs in a subject/subjects in which they have demonstrated potential over KS3. The UAS programme would be adjusted accordingly.

Individual students are identified to study a bespoke curriculum. Parents will be contacted to discuss this pathway.

*Students in Pathway 1 &2 will be assigned either Trilogy or Separate Science.

** When choosing to study French or Spanish, students will only be able to select the subject that they currently study in Year 9, i.e. French Or Spanish. Option forms online will be customised to your child. This does not apply to Polish, where only native speakers will be allowed to select this.

Core Compulsory Courses

These are the subjects **ALL PUPILS** will be studying:

- RE
- English Language
- English Literature
- Mathematics
- Science (Trilogy or Separate)
- Core PE (non-exam)

All students will study the compulsory core subjects: **RE, English, Maths and core PE (non-examined), along with the following:**

KS4 Curriculum Pathways - table

	Science	One of the following	One of the following	Option Subjects
Pathway 1	Separate Science: Biology Chemistry Physics (3 GCSEs) Or Trilogy Science (2 GCSEs)	French Spanish Polish	Geography History	2 of the following: Art & Design: Fine Art Business BTEC Enterprise Computer Science Design & Technology Drama Film Studies Food Preparation & Nutrition Geography or History BTEC Health & Social Care Music PE Sport – Cambridge National Sociology

	Science	One of the following	One of the following	Option Subjects	
Pathway 2	Separate Science: Biology Chemistry Physics (3 GCSEs) Or Trilogy Science (2 GCSEs)	Geography History French Spanish Polish		3 of the following: Art & Design: Fine Art Business BTEC Enterprise Computer Science Design & Technology Drama Film Studies Food Preparation & Nutrition Geography or History BTEC Health & Social Care Music PE Sport – Cambridge National Sociology French Spanish Polish	
Pathway 3	Trilogy Science (2 GCSEs) <i>Or Entry Level certificate</i>			3 of the following: Art & Design: Fine Art Business BTEC Enterprise Computer Science Design & Technology Drama Film Studies Food Preparation & Nutrition Geography or History BTEC Health & Social Care Music PE Sport – Cambridge National Sociology French Spanish Polish	ASDAN course and/or study support

	Core Subjects	Additional Qualifications
Bespoke Curriculum	Functional Maths and English, RE, Science	UAS Units & Possibly 1-2 additional GCSEs

The Curriculum – Years 10 and 11 – Key Stage 4

GCSE Courses


GCSE courses run for two years.

The means of assessment varies from subject to subject but is generally around:

- An examination
- School based controlled assessment

Courses are graded as follows:

New grading		Old grading
9		A*
8	=	A
7		
6		B
5	=	C
4		
3		D
2	=	E
1		F
		G
U	=	U

Source: Ofqual 

Exam Boards

The Examination Boards listed for each syllabus can be found on the internet as follows: -

www.edexcel.com

www.aqa.org.uk

www.ocr.org.uk

www.cie.org.uk

You can find on each website the subject specification and assessment materials for each syllabus/subject listed.

Students are encouraged to discuss their choices with parents, their subject teachers, and Form Tutor. They will also receive information on different curriculum areas through their Subject Leader. There will be the opportunity for you to consult the school on these details at this evening's meeting when the curriculum will be explained further.

After this, if you still require a further discussion, you are welcome to contact the school and discuss any concerns with Miss Surtees – Head of Year 9 e.surtees@hughfaringdon.org

How Do I Choose?

Do:

- choose courses you know you will enjoy
- choose courses you are interested in
- choose a range of different courses, so that you have a broad base from which to choose your post-16 courses
- read the subject information on the next few pages very carefully
- ask the advice of your subject teachers, your tutor and our careers advisers
- discuss it with your parents
- **THINK VERY CAREFULLY** about the subjects you choose.
It is very difficult indeed to change course once you have started.

Don't:

- choose a course simply because your friends have
- allow either like or dislike of particular teachers to influence your choice
- choose a course because you think it might be easy
- make your decision hastily
- drop any subject you may want to study after Year 11
- drop any subject you may require for entry to a particular occupation or course of further study.

Religious Education

AQA 8063

What will I study?

Component 1: Catholic Christianity

- Creation
- Incarnation
- The Triune God
- Redemption
- Church
- Eschatology



Component 2: Perspectives on Faith

- Judaism:
 - Beliefs, teachings and practices
- Religious, Philosophical and Ethical themes:
 - Theme A - Religion, relationships and families
 - Theme C - Religion, human rights and social justice

How will I study?

It is very important that students keep up with their class work and they must meet their homework deadlines. When they receive comments and targets back from their teacher, they need to take note of these and work towards achieving them. By participating in the lesson and getting involved in class discussions their learning will be more interactive. Only through practise of exam questions and learning the religious teachings/Bible references, can students hope to improve their exam technique and achieve their best result. Students will have the opportunity to engage in various learning activities such as research and PowerPoint presentations, drama and peer learning.

How will it be assessed?

There is no coursework. The assessment consists of **two** written examination papers at the end of **Year 11**, as outlined below:

Paper 1:	Catholic Christianity	50% of exam	1 hour 45 minutes
Paper 2:	Perspectives on Faith	50% of exam	1 hour 45 minutes

Students will be assessed on their ability to:

- A01 demonstrate knowledge and understanding of religion and belief
- A02 analyse and evaluate aspects of religion and belief, including their significance and influence

English

AQA 8702

AQA 8700

What will I study?

- “An Inspector Calls” OR “Lord of the Flies” modern text
 - “Macbeth “ drama text
 - “Power and Conflict” poetry
 - “Dr Jekyll and Mr. Hyde” novel
 - Language: Explorations in creative reading and writing Paper 1
 - Language: Writers’ viewpoints and perspectives Paper 2
- 19th century to 21st century (literary and non-literary texts)

How will I study?

Through texts, supported by extensive contextualising and perspectives, and, where appropriate, DVD versions of them; speaking and listening assignments to develop your knowledge of the texts and support your own speaking and listening presentation will also be completed.

Through a selection of extracts to support your analysis of reading and writing across three centuries and across literary and non-literary texts.

How will it be assessed?

You will have a mid-half-term formative assessment followed by a summative assessment at the end of the text.

All marking will be based on PM (performance measure) descriptors, revised on a yearly basis depending on exam board grade boundary changes.

You will also complete a ‘green pen’ policy of your own work (skills self-assessment) on a very regular basis.



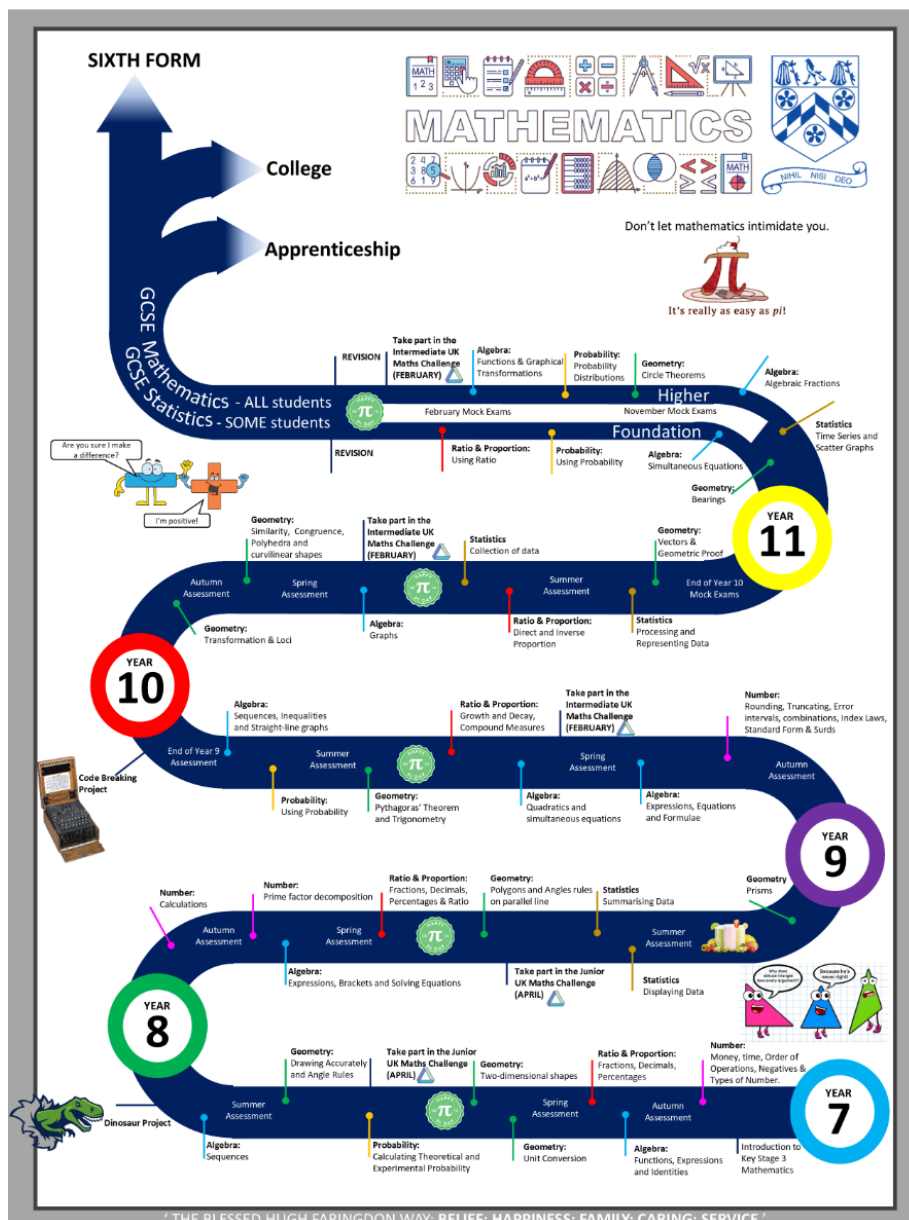
Mathematics

Edexcel 1MA1

What will I study?

GCSE Mathematics gives students the opportunity to:

- develop fluent knowledge, skills and understanding of mathematical methods and concepts
- acquire, select and apply mathematical techniques to solve problems
- reason mathematically, make deductions and inferences, and draw conclusions
- comprehend, interpret and communicate mathematical information in a variety of forms appropriate to the information and context



How will I study?

GCSE Mathematics gives students the opportunity to develop the ability to:

- acquire and use problem-solving strategies
- select and apply mathematical techniques and methods in mathematical, every day and real-world situations
- reason mathematically, make deductions and inferences, and draw conclusions
- interpret and communicate mathematical information in a variety of forms appropriate to the information and context.

How will it be assessed?

Two written papers each of which contributes equally to the final grade.

- Exam board is Eduqas.
- Tiered papers
 - Foundation Tier grades 1-5 available
 - Higher Tier grades 4-9 available (grade 3 may be allowed)
- Each paper is 2 hours, 15 minutes.
- Each paper is 120 marks
- Paper 1 is Non-Calculator, Paper 2 is Calculator.

What Equipment do I need?

- Mathematics set including:
 - Ruler
 - Pair of Compasses
 - Protractor
- Scientific Calculator: Casio FX83GT CW, FX85GT CW or FX991 CW



Biology

AQA 8461

What will I study?

Biology gives pupils the chance to gain a good understanding of human biology, organisms, evolution and the environment.

The specification integrates the principles of 'How Science Works' throughout the units and in the controlled assessment. The course helps put Biology in the context of students' everyday lives with topics ranging from 'Keeping Healthy' to 'Humans and their Environment'.

The specification is based on a series of topics related to the living world and relevant to students. It is designed to help them understand how science can be used to explain the world in which they live, and the impact humans have. The topics are shown below:

1. Cell Biology
2. Organisation
3. Infection and Response
4. Bioenergetics
5. Homeostasis and Response
6. Inheritance, Variation and Evolution
7. Ecology



What is involved?

Pupils will have a more intensive Science course, there is a greater amount of theory to be covered in each of the topics and more practical work that they may be assessed on.



How is it assessed?

Pupils will sit two papers, each paper will assess knowledge and understanding from different topics. The questions will use clearer and simpler language, to assess students only on their scientific ability.

Both papers are 1 hour 45 minutes and are available at foundation and higher tier. Each paper is worth 50% of the overall grade and has 100 marks available.

Chemistry

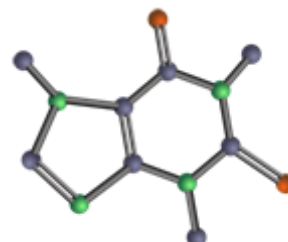
AQA 8462

What will I study?

Chemistry helps to explain what makes up the world around us. It looks at the physical world of substances – how things are made up and the processes, reactions and treatments that can change them and how business and industry use these properties.

Pupils will study the following units:

1. Atomic structure and the periodic table
2. Bonding, structure, and the properties of matter
3. Quantitative chemistry
4. Chemical changes
5. Energy changes
6. The rate and extent of chemical change
7. Organic chemistry
8. Chemical analysis
9. Chemistry of the atmosphere
10. Using resources



What is involved?

Pupils will have a more intensive Science course, there is a greater amount of theory to be covered in each of the topics and more practical work that they may be assessed on.

How is it assessed?

Pupils will sit two papers, each paper will assess knowledge and understanding from different topics. The questions will use clearer and simpler language, to assess students only on their scientific ability.

Both papers are 1 hour 45 minutes and are available at foundation and higher tier. Each paper is worth 50% of the overall grade and has 100 marks available.



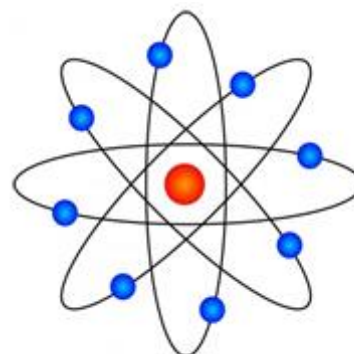
Physics

AQA 8463

What will I study?

Physics is the study of how things work from the very large to the incredibly small – the universe to the atom. The specification introduces students to some of the concepts and applications of physics from the use and transfer of energy, to insights into waves, radiation, and space. Pupils will study the following units:

1. Forces
2. Energy
3. Waves
4. Electricity
5. Magnetism and electromagnetism
6. Particle model of matter
7. Atomic structure
8. Space physics



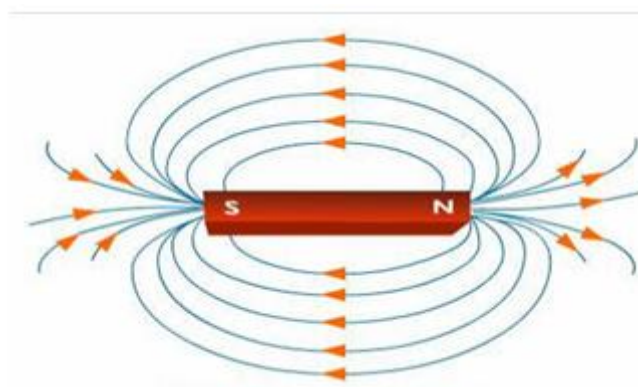
What is involved?

Pupils will have a more intensive Science course, there is a greater amount of theory to be covered in each of the topics and more practical work that they may be assessed on.

How is it assessed?

Pupils will sit two papers, each paper will assess knowledge and understanding from different topics. The questions will use clearer and simpler language, to assess students only on their scientific ability.

Both papers are 1 hour 45 minutes and are available at foundation and higher tier. Each paper is worth 50% of the overall grade and has 100 marks available.



Combined Science Trilogy

AQA 8464

What will I study?

Biology:

- Cell biology
- Organisation
- Infection and response
- Bioenergetics
- Homeostasis and response
- Inheritance, variation and evolution
- Ecology



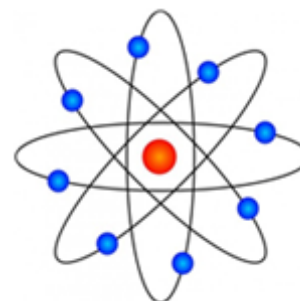
Chemistry:

- Atomic structure and the periodic table
- Bonding, structure, and the properties of matter
- Quantitative chemistry
- Chemical changes
- Energy changes
- The rate and extent of chemical change
- Organic chemistry
- Chemical analysis
- Chemistry of the atmosphere
- Using resources



Physics:

- Forces
- Energy
- Waves
- Electricity
- Magnetism and electromagnetism
- Particle model of matter
- Atomic structure



How will I study?

Scientists go about solving a problem in a certain way. You will need to be a good observer so that you can think out ideas and propose explanations. You will often have to test your ideas by experiment and investigation – writing down and interpreting the results. You will also have to look at the ways in which science and technology affect people and the environment. The ozone layer, acid rain, nuclear energy, and pesticides are but a few of these. This will involve you in group discussion and personal research.

How is it assessed?

The double award is a linear qualification. There are six papers: two biology, two chemistry and two physics. Each will assess different topics. All the papers are 1 hour 15 minutes in length. There are two tiers available, foundation and higher. Each is worth 16.7% of the overall grade and has 70 marks available.

Art and Design: Fine Art OCR J171

We live in a visual society where Art and Design has a crucial influence on almost everything, we spend our money on and interact with in our daily lives.

A qualification in Art and Design not only demonstrates that you can paint and draw, but it also shows that you can problem-solve, are self-motivated and have the confidence to work independently. A qualification in Art and Design proves that you can use higher level thinking skills to analyse, evaluate and create! Being creative - one of the main skills developed by an Art and Design course – is an extremely important quality that can be transferred to a career in many other fields. This is why Arts students are highly sought after by employers!

An Art and Design course would be suitable for you if you are: able to work independently; able to organise and manage your time effectively in lessons and at home; are self-motivated and can research in books and on the internet to find out about artists and artwork. You should be interested in visual imagery and how it can affect the way we think and feel. You should enjoy practical based activities such as exploring different media and techniques.

So, if you are creative, organised and enjoy new challenges, this is the course for you!

How will I study?

Researching to find out about Artists and Designers



Experimenting with different media and techniques



Developing design ideas





Creating original and personal artwork



How will it be assessed?

The course consists of two Units. Unit 1 is 100% coursework and is worth 60% of the final mark. Unit 2 is an 'Externally Set Assignment' and takes place in Year 11. Students are required to choose one of five thematic starting points decided by the exam board and then research, plan and develop their ideas over three months before a creating a final design under exam conditions.

Business OCR J204



Business is an up-to-date and engaging qualification that is entirely relevant to the world of business today.

This qualification teaches key business studies knowledge and skills and equips learners with the awareness and confidence to consider how different business situations affect business decisions. The qualification will prepare learners for the world of work and provide them with the knowledge needed to make informed choices about a wide range of further learning opportunities and career pathways. Equally, the course develops life skills that enable them to become financially and commercially aware.

What will I study?

Business 1: Business Activity, Marketing and People 50%

In this section, learners explore how and why businesses start and grow. Knowledge and understanding of business activity include the topics of marketing, people, business ownership and growth. This unit culminates in an external examination worth 80 marks. It is split into two sections that assess students on the topics of business activity, marketing and human resources units.

Business 2: Operations, Finance and Influences on Business 50%

This component takes a more detailed look at the role of operations and finance and introduces learners to external influences on business. It explores the importance of these influences and how businesses change in response to them. This unit culminates in an external examination worth 80 marks. It is split into two sections and assesses content from operations, finance and influences on business.

Why choose Business?

You might have an interest in business and want to start your own business one day. You may have an enquiring mind and be interested in learning about the world around you, how businesses are set up, and what it is that makes someone a great entrepreneur.

While studying this course, you will learn a lot of new information, study key business theory and gain a range of important skills which will serve you well in everyday life and your future career. You will be introduced to the world of business and the interdependent nature of business activity, influences on business, business operations, finance, marketing and human resources and how these interdependences underpin business decision making.

How will it be assessed?

At the end of the course, you will take two written examinations. Each exam lasts 90 minutes and accounts for 50% of the course assessment. To be successful you need to be able to learn and retain a wide range of specialist, complex information and be able to write high quality, analytical and evaluative answers, drawing on your written English skills. Equally, you must be able to respond to a wide range of calculation questions requiring mathematical knowledge and skills.

BTEC First Enterprise

Edexcel

The Pearson BTEC First is a Level 2 qualification. It takes a practical approach to developing student knowledge and understanding of Business. The 3 mandatory units are listed below and take the form of both internal coursework and one external assessment

The qualification paves the way for a range of further study options including, for the right students, the BTEC Business Level 3 qualification.



What will I study?

Over the 2 years, students will study the following mandatory units:

- Component 1 Exploring Enterprise (Written report on 3 tasks - coursework)
- Component 2 Planning and presenting a micro enterprise idea (Plan your own idea and present and idea coursework)
- Component 3 Finance (External assessment)

Why choose the BTEC First in Business?

You might have an interest in business and want to start your own business one day. You may have an enquiring mind and be interested in learning about the world around you, how businesses are set up, and what it is that makes someone a great entrepreneur that their business is a success and not a failure. Taking a practical approach to learning, with the majority of the assessment being coursework, suits your learning style and will help you to succeed.

While studying this course, you will learn a lot of new information, study key business theory which will be applied to real-life settings and gain a range of important skills which will serve you well in everyday life and your future career. You will be doing a lot of independent research in your local area which will focus on SMEs (small to medium sized businesses)

How will it be assessed?

You will complete written reports for component 1 and 2 and present your idea for your own business in component 2. Component 3 will be studied in year 11 with an exam at the end of the unit and once chance to resubmit should you not hit the pass mark.

Component 1 will be assessed in year 10 with one opportunity to resubmit.

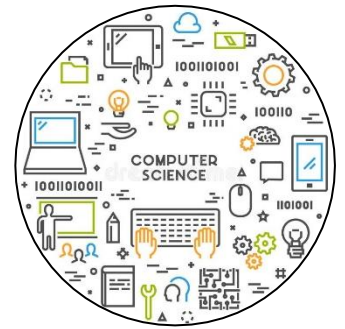
You will gain either a level 2 or a level 1. If you complete the BTEC with a level 2 you will be able to go on and study level 3 or an A-level.

Computer Science Edexcel

Why study Computer Science?

Computer Science is centred around understanding how computers work, learning the fundamentals of programming, and solving problems.

- understand and apply the fundamental principles and concepts of computer science, including abstraction, decomposition, logic, algorithms, and data representation
- analyse problems in computational terms through practical experience of solving such problems, including designing, writing and debugging programs
- think creatively, innovatively, analytically, logically and critically
- understand the components that make up digital systems and how they communicate with one another and with other systems
- understand the impact of digital technology on wider society, including issues of privacy and cybersecurity
- apply mathematical skills relevant to computer science



What can this qualification lead to afterwards?

A Computer Science GCSE, when accompanied by other subjects and then further qualifications, can lead to exciting career paths such as:

- Software Developer
- Game Developer
- Data Analyst
- Cybersecurity Specialist
- Network Engineer
- AI and Machine Learning Technician

How will it be assessed?

Specification: Pearson Edexcel GCSE Computer Science 2020 (9-1)

The course is 100% exam based.

Paper 1:

- Written exam,
- 75 marks,
- 1 hour 30 minutes.
- Worth 50% of the overall grade.

Paper 2:

- On screen exam,
- 75 marks,
- 2 hours.
- Worth 50% of the overall grade.

What will I study?

Topics covered include:

- **Computational thinking**
 - Decomposition
 - Abstraction
 - Algorithms
 - Truth Tables
- **Data**
 - Binary
 - Data representation
 - Data storage
 - Data compression
- **Computers**
 - Hardware
 - Software
 - Programming languages
- **Networks**
 - Networks
 - Network security
- **Issues and impact**
 - Environmental issues
 - Ethical issues
 - Legal issues
 - Cybersecurity
- **Problem solving with programming**
 - Developing code
 - Constructs
 - Data types and structures
 - Input/Output
 - Operators
 - Subprograms

Where can I find out more?

<https://qualifications.pearson.com/en/qualifications/edexcel-gcses/computer-science-2020.html>

For further details, please speak to Mrs Hulin.

Design and Technology

OCR J310

What will I study?

Students will study the Principles of Design and Technology and in-depth Specialist Techniques. They will get the opportunity to work creatively when designing and making using a broad range of design processes, materials, techniques, and equipment. Students will be required to use critical thinking, leading towards invention and design innovation. They will design and make prototypes that solve real and relevant problems, considering their own and others' needs, wants, and values. Students will gain awareness and learn from wider influences on Design and Technology including historical, social, cultural, environmental, and economic factors.

How will I study?

Students will complete a series of 'design and make' assignments involving research, investigation, disassembly, drawing, sketching, analysing, planning, evaluating, and recording results. Students will then produce a final practical project, responding to a contextual challenge set by the exam board, consisting of a prototype and a portfolio of evidence.

Design and Technology students will be expected to spend approximately two hours a week on their homework, focusing on revision of all technical principles, in preparation for the written exam.

How will it be assessed?

The following assessment criteria will be evidenced in the **practical portfolio** (NEA):

- Identifying and investigating design possibilities a Primary User and Stakeholder
- Producing a design brief and specification
- Generating design ideas
- Developing design ideas
- Realising design ideas
- Analysing and evaluating

The following is assessed in the **written exam**:

- The Principles of Design and Technology
- In Depth Specialist Techniques

Non-exam assessment: 50% of GCSE

Written exam (2 hours): 50% of GCSE

Work will be marked by teachers and moderated by OCR



Drama

WJEC / Eduqas C69QS

What will I study?

Component 1: Devising Theatre 40% of qualification

Non-exam assessment: Internally assessed and externally moderated.

Content overview:

Learners will be assessed on **either** acting **or** design. Learners participate in the creation, development and performance of a piece of devised theatre using **either** the techniques of an influential theatre practitioner **or** a genre, in **response to a stimulus** set by WJEC.

Learners must produce:

- A realisation of their piece of devised theatre
- A portfolio of supporting evidence
- An evaluation of the final performance or design.

Component 2: Performance from text 20% of qualification

Non-exam assessment: externally assessed by a visiting examiner.

Content overview:

- Learners will be assessed on **either** acting **or** design
- Learner's study **two** extracts from the **same** performance text chosen by the centre
- Learners participate in **one** performance using sections of text from **both** extracts

Component 3: Interpreting Theatre 40% of qualification
Written examination: 1 hour 30 minutes

Content overview:

Section A: Set Text - Noughts & Crosses Malorie Blackman

- **Students are expected to create a directorial vision for the play**
 - This means students study and plan the Lighting, Set, Costume and sound elements of the performance.
 - The exam questions students on their ability to create a design aspect and justify their choices using context and audience awareness.

Section B: Live Theatre Review

One question, from a choice of two, requiring analysis of evaluation of a given aspect of a live theatre production seen during the course.

How will I study?

- In class workshop rehearsals
- Live theatre experience
- Practical exploration of theoretical ideas
- Exploration of Design skills
- External theatre company workshops
- Focused revision and exam technique sessions



How will it be assessed?

- Component 1: Internally examined (externally moderated) by the end of year 10
 - Practical performance piece as **either** actor **or** designer
 - Devising portfolio of 750 -900 words
 - Controlled Assessment Evaluation of performance 1 hour 30 mins
- Component 2: Externally examined at the start of year 11
 - Practical performance piece as **either** actor **or** designer
- Component 3: Externally assessed written examination at the end of the course
 - Written paper of 1 hour 30 mins

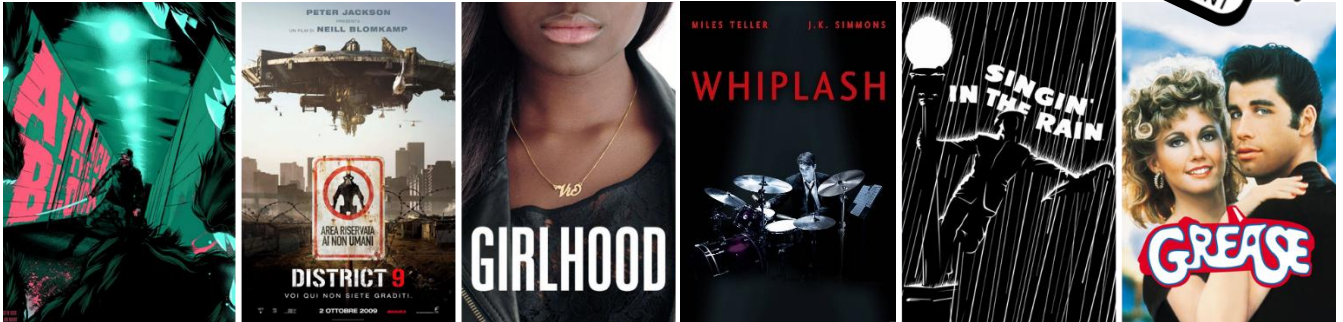
Extra resources

- A range of visual and audio learning resources in SharePoint
- EDUQAS website
- One-to-one support
- Extra sessions outside timetabled lessons
- A wide range of theatre books in the Drama department and the library

Film Studies WJEC Eduqas C670QS



What will I study?



Attack the Block

Girlhood

Singin' in the Rain

District 9

Whiplash

Grease

We explore a range of film genres and production types, developing knowledge of Hollywood's development from the 1950s up to modern cinema, as well as Independent, foreign language and home-grown talent.

How will I study?

Much of our work is film based: watching either the set texts or short extracts from other genre films. We immerse ourselves in the language of film to explore how our cinematic texts create meaning, how they are created around historical or social contexts and we think about the ways in which they represent members of national and international societies to reflect or inform on how identities are constructed.

Homework will be based around developing your readiness for your coursework and will take the form of research, watching films, reflecting on them and exploring narratives and archetypes.

How will it be assessed?

You will build up to completing two exam papers on the 6 studied films, utilising stepped questions, as well as a non-exam assessed piece of production work, either as a short film extract or a portion of a script from an imagined longer film.

Most terms will comprise of two assessments, a formative (either multiple choice questions, or essay based) and a summative (exam focussed with stepped questions ranging from single sentence answers to short form essays)

You will also complete a 'green pen' policy of your own work (skills self-assessment) on a regular basis and discuss the development of your coursework on a term by term basis with your teacher.

Food Preparation and Nutrition

AQA 8585

What will I study?

The course focusses on practical cooking skills to ensure students develop a thorough understanding of nutrition, food provenance and the working characteristics of food materials. Food preparation skills are integrated into five core topics:

- Food, nutrition and health
- Food science
- Food safety
- Food choice
- Food provenance

Upon completion of this course, students will be qualified to go on to further study or embark on an apprenticeship or full-time career in the catering or food industries.



How will I study?

Practical investigations are a vital element of the course and will develop students' knowledge, skills and understanding to enable them to plan, prepare, cook and present a wide range of dishes.

Students will complete two coursework units during Year 11, following tasks set by the exam board.

Students will develop their theoretical knowledge of food preparation and nutrition to prepare for the written exam in Year 11.

How will it be assessed?

Non-Exam Assessment (NEA)

Task 1: Food Investigation - 30 marks

Written or electronic report (1500-2000 words) including photographic evidence of the practical investigation.

Task 2: Food Preparation Assessment - 70 marks

Written or electronic portfolio including photographic evidence. Students will prepare, cook, and present a final menu of three dishes within a single period of no more than 3 hours, planning in advance how this will be achieved.

Written Exam (50% of GCSE)

- 1 hour 45 minutes
- 100 marks

French

AQA 8652

What will I study?

You will develop your grammatical knowledge and your ability to understand information and converse about a wide range of everyday topics. Lessons and other learning activities will be structured to develop the four key skills of reading, writing, listening and speaking.

What topics will I learn about?

The new GCSE course develops your knowledge and your ability to understand, converse, read and write about key areas of interest to young people and builds upon learning at Key Stage 3. The three themes on which the assessments are based are:

- **Theme 1:** People and lifestyle

Theme 1 covers the following three topics:

- **Topic 1:** Identity and relationships with others
- **Topic 2:** Healthy living and lifestyle
- **Topic 3:** Education and work

- **Theme 2:** Popular culture

-

Theme 2 covers the following three topics:

- **Topic 1:** Free-time activities
- **Topic 2:** Customs, festivals and celebrations
- **Topic 3:** Celebrity culture

- **Theme 3:** Communication and the world around us

Theme 3 covers the following three topics:

- **Topic 1:** Travel and tourism, including places of interest
- **Topic 2:** Media and technology
- **Topic 3:** The environment and where people live

How will I study?

Lessons will be taught using a variety of teaching and learning strategies to engage and motivate learners and ensure good progress. In addition, off-timetable activities will be scheduled, where appropriate, to develop specific knowledge and skills and to allow pupils to work together to apply their learning to real-life settings. Regular informal and formal assessments will guide and personalise teaching and learning to maximise attainment.

How will it be assessed?

In the new GCSE, students must take all four examination papers at the same tier. GCSE French has a Foundation Tier (grade 1-5) and a Higher Tier (grade 5-9). This qualification is linear. This means that students sit all their examinations at the end of the course.

Paper 1 : Listening
<p>What's assessed</p> <ul style="list-style-type: none">• Understanding and responding to spoken extracts comprising the defined vocabulary and grammar for each tier• Dictation of short, spoken extracts
<p>How it's assessed</p> <ul style="list-style-type: none">• Written exam: 35 minutes (Foundation tier), 45 minutes (Higher tier)• 40 marks (Foundation tier), 50 marks (Higher tier)• 25% of GCSE <p>Recording controlled by the invigilator with built-in repetitions and pauses.</p> <p>Each exam includes 5 minutes' reading time at the start of the question paper before the listening material is played and 2 minutes at the end of the recording for students to check their work.</p>
<p>Questions</p> <ul style="list-style-type: none">• Section A – listening comprehension questions in English, to be answered in English or non-verbally (32 marks at Foundation tier and 40 marks at Higher tier)• Section B – dictation where students transcribe short sentences, including a small number of words from outside the prescribed vocabulary list (8 marks at Foundation tier and 10 marks at Higher tier)

Paper 2 : Speaking
<p>What's assessed</p> <ul style="list-style-type: none">• Speaking using clear and comprehensible language to undertake a Role-play• Carry out a Reading aloud task• Talk about visual stimuli
<p>How it's assessed</p> <ul style="list-style-type: none">• Non-exam assessment (NEA)• 7–9 minutes (Foundation tier) + 15 minutes' supervised preparation time• 10–12 minutes (Higher tier) + 15 minutes' supervised preparation time• 50 marks (for each of Foundation tier and Higher tier)• 25% of GCSE

Questions

The format is the same at Foundation tier and Higher tier, but with different stimulus materials for the Role-play and the Reading aloud task. For the Photo card task, the same photos are used at both tiers.

- Role-play – 10 marks (recommended to last between 1 and 1.5 minutes at both tiers)
- Reading aloud task and short conversation – 15 marks (recommended to last in total between 2 and 2.5 minutes at Foundation tier and between 3 and 3.5 minutes at Higher tier)
- Reading aloud task: minimum 35 words of text at Foundation tier and 50 words at Higher tier
- Short unprepared conversation
- Photo card discussion – 25 marks (recommended to last between 4 and 5 minutes in total at Foundation tier, and between 6 and 7 minutes in total at Higher tier)
- Response to the content of the photos on the card (recommended to last approximately 1 minute at Foundation tier and approximately 1.5 minutes at Higher tier)
- Unprepared conversation (recommended to last between 3 and 4 minutes at Foundation tier and between 4.5 and 5.5 minutes at Higher tier)

Paper 3 : Reading

What's assessed

- Understanding and responding to written texts which focus predominantly on the vocabulary and grammar at each tier
- Inferring plausible meanings of single words when they are embedded in written sentences
- Translating from French into English

How it's assessed

- Written exam: 45 minutes (Foundation tier), 1 hour (Higher tier)
- 50 marks (for each of Foundation tier and Higher tier)
- 25% of GCSE

Questions

- Section A – reading comprehension questions in English, to be answered in English or non-verbally (40 marks)
- Section B – translation from French into English, minimum of 35 words at Foundation tier and 50 words at Higher tier (10 marks)

Paper 4 : Writing

What's assessed

- Writing text in the language in a lexically and grammatically accurate way in response to simple and familiar stimuli
- Translating from English into French

How it's assessed

- Written exam: 1 hour 10 minutes (Foundation tier), 1 hour 15 minutes (Higher tier)
- 50 marks (for each of Foundation tier and Higher tier)
- 25% of GCSE

Questions

Foundation tier

- Question 1 – student produces five short sentences in response to a photo (10 marks)
- Question 2 – student produces a short piece of writing in response to five compulsory bullet points, approximately 50 words in total (10 marks)
- Question 3 – student completes five short grammar tasks (5 marks)
- Question 4 – translation of sentences from English into French, minimum 35 words in total (10 marks)
- Question 5 (overlap question) – student produces a piece of writing in response to three compulsory bullet points, approximately 90 words in total. There is a choice from two questions (15 marks)

Higher tier

- Question 1 – translation of sentences from English into French, minimum 50 words in total (10 marks)
- Question 2 (overlap question) – student produces a piece of writing in response to three compulsory bullet points, approximately 90 words in total. There is a choice from two questions (15 marks)
- Question 3 – open-ended writing task (student responds to two bullets, producing approximately 150 words in total). There is a choice from two questions (25 marks)

-

Key resources and opportunities, for all students, including the Gifted and Talented

- Clear learning objectives with differentiated outcomes
- Extension activities for key skills
- Manipulation and application of language in a variety of settings
- Developing pupils' skills in constructing complex sentences
- Use of modelling and exemplar work
- Consolidation of vocabulary and linguistic concepts across the four skills areas
- Developing skills in using vocabulary to apply within defined contexts

Geography

AQA 8035

What will I study?

Geography is a topical subject. Students who study Geography will gain an understanding of the world around them and learn about the effect the environment has on people and the communities in which they live. Students will develop a variety of skills through practical work including fieldwork and decision-making exercises.

Geography GCSE consists of 3 units.

- Unit 1: Living with the Physical Environment
Hazards, the living world, physical landscapes in the UK (35%)
- Unit 2: Challenges of the Human Geography
Urban issues, economic world, resource management (35%)
- Unit 3: Geographical skills and issue evaluation (20%)

How will I study?

Geography is taught through the use of maps, aerial photography, and field trips. The lessons are a mix of individual, group and teacher led work and discussions. The students are encouraged to make presentations and develop independent learning techniques. Students are encouraged to use ICT within lessons. The course challenges their enquiry and thinking skills by using decision-making exercises with specific reference to sustainable development and Global interdependence and citizenship.

Students need to undertake two Geographical enquiries in contrasting environments, each of which must include the use of primary data. Therefore, students will be invited to attend a fieldtrip day during the course.

How will it be assessed?

There will be 3 exams all of which take place at the end of year 11. Students are required to answer multiple choice questions, short open, open response and extended writing questions. Good literacy skills are essential to achieving the top grades.

Paper 1 and Paper 2 examine Unit 1 and Unit 2

Each paper is 1 hour and 30 minutes

There is a mixture of multi choice questions, short answer and more extended writing

Paper 3

1 hour and 30 minutes

This exam tests the skills and fieldwork along with issues evaluation, the issues evaluation will have pre-release material that your classroom teacher issue to you prior to the exam.



BTEC Health and Social Care Level 2

Pearson



What will I study?

The Pearson BTEC Level 2 Tech Award in Health and Social Care has been developed to give you the opportunity to:

- engage in learning which is relevant to you and will provide opportunities to develop a range of skills and techniques, personal skills and attributes essential for successful performance in working life
- progress to employment in the health and social care sector
- progress to related general and/or vocational qualifications
- develop your own personal growth and engagement in learning.

Units of study

Component 1	Human Lifespan Development	Internally assessed
Component 2	Health and Social Care Services and Values	Internally assessed
Component 3	Health and Wellbeing	Externally assessed

What will I learn?

This course will provide you with a solid understanding of health and social care that will help you to make choices about your future study options and career choices. Through this course, you will gain important knowledge, understanding and skills that are the foundations for working in this area. This will include many of the skills that are used by health care professionals on a day-to-day basis, such as assessing people's health and wellbeing and designing individual care plans. You will also learn about the health care services and the importance of care values. You will also learn to develop your independent learning skills, communication skills, critical analysis and evaluation, decision-making and problem solving.

How will I be assessed?





The Pearson Level 2 Tech Award in Health and Social Care is assessed in two different ways. Components 1 and 2 are assessed through internal assessments. The assessments will cover the theory taught in lessons for each of the components and will be an opportunity to apply your knowledge and skills to the assignments in both a written and practical way. Component 3 is an external assessment. This will be set and marked externally by the exam board (Pearson). This assessment will be an opportunity to bring together your knowledge and understanding on component 1 and component 2.

History

Edexcel 1HI0

Why study History?

- People in the past usually did things for a reason but just like now, things did not always turn out as planned. Studying the past helps you understand the present.
- History is the most exciting and interesting subject you can study – as it is all about people.

Unit title and description	Assessment
	<p style="text-align: center;">Option B1</p> <p style="text-align: center;">British Depth Study: Anglo-Saxon and Norman England, c1060-88</p>
	<p style="text-align: center;">P4</p> <p style="text-align: center;">Period study: Superpower relations and the Cold War, 1941-91</p>
	<p style="text-align: center;">Option 12</p> <p style="text-align: center;">Thematic study and historic environment: Warfare and British society, c1250-present and London and the Second World War, 1939-45</p>
	<p style="text-align: center;">Option 31</p> <p style="text-align: center;">Modern depth study: Weimar and Nazi Germany, 1918-39</p>

How do we study History?

Students use a wide range of texts and there is a strong emphasis on the use of film and 20th century archive material. Research develops independent study skills, and group discussions improve analysis and use of language. Students learn to make judgements and develop informed opinions.

Useful skills gained:

Critical thinking / Essay writing / Inferring / Problem solving / Working with others

How will it be assessed?

Music

AQA 8271

What will I study?

There will be three components to the course Performance, Composition and Listening.

Performances will generally be chosen by the student and ultimately two performances will be submitted to the board.

A range of compositional techniques and styles will be studied culminating in two compositions that will be recorded and submitted to the board.

The listening component will enable students to study music by others and develop a greater understanding of musical concepts. You will study a series of works set by the board.



How will I study?

Performance: 30%

Regular performances in class and concerts will take place throughout the course culminating in two pieces, a solo and an ensemble being recording and submitted to the board.

Compositions: 30%

Initially there will be a number of mini composition projects focusing and developing skills and techniques that will help create effective final compositions. Ultimately you will need to produce two compositions with a combined length of at least three minutes. Each composition will be recorded and submitted to the board. The first composition will be undertaken in Year 10 and can be in any style. The second composition will need to reflect a brief set by the board in Year 11.

Listening: 40%

You will study four areas of music and two set works from each area.

The areas of study are:

- Western Classical Tradition 1650-1910
- Popular Music
- Traditional Music
- Western Classical Tradition since 1910

How will it be assessed?

Two performances will be recorded. They will be marked internally and moderated externally. Two compositions will be recorded. They will be marked internally and moderated externally. A listening exam of 1 hour 45 minutes will take place at the end of the course. Questions will be based on the set works.

Personal and Social Development ASDAN Level 1

The Personal and Social Development ASDAN course helps young people become confident individuals who are physically, emotionally and socially healthy. It is a Level 1 course.

What will I study?

The ASDAN Personal and Social Development Level 1 course has been developed to give you the opportunity to:

- understand the benefits of living a healthy lifestyle
- prepare for life in the future, exploring options and opportunities for further study and careers
- make a positive contribution to society and embrace change
- to manage risk together with your own wellbeing

Units of Study will include:

- Healthy eating- Understand key food groups and the benefits they have on your health.
- Healthy lifestyle- Undertake new hobbies and activities that will benefit your lifestyle.
- Managing your own money- Understand different banking options and how to take responsibility for your own finances later in life.
- Preparation for work- Understand how to complete a job application, complete a mock interview and how to apply for jobs of interest to you.
- Working towards goals- How to achieve your goals and targets linked to school and life.

In addition, students will have the chance to work on their study skills, independent study, presentation skills, computer skills, collaboration with others.

How will I study? / What will I learn?

The course will provide students with the necessary skills to manage their lives, whilst improving valuable ICT, English and Maths skills for their lives outside of the classroom. They will develop key soft skills and prepare for employment in the future. There will be challenges and tasks to complete to show an understanding and awareness of the subject content. The teaching will aim to match the students' needs and strengths, to ensure they can access the course content. Students will need to demonstrate their knowledge and understanding through presentations, posters, record books and practical based activities. There will also be an opportunity to take online courses, leading to work experience opportunities.

How will it be assessed?

The ASDAN Level 1 is assessed through internal assessments. These include a variety of pieces of work and evidence provided by students to show they have completed each unit. They must complete 4 units to achieve the Level 1 Pass. Students will complete a portfolio for each unit including worksheets, posters, projects and controlled challenges.

Physical Education

AQA 8582

What will I study?

- 1. [Applied anatomy and physiology](#)
- 2. [Movement analysis](#)
- 3. [Physical training](#)
- 4. [Use of data](#)
- 5. [Sports psychology](#)
- 6. [Socio-cultural influences](#)
- 7. [Health, fitness and wellbeing](#)

How will I study?

You will have **five** lessons of PE

- 1 x Practical lesson
- 4 x Theory lessons

How will it be assessed?

You will be assessed through demonstrating your knowledge of the theory and performance skills in both non-examined assessment (NEA) and through examinations

- Two external exams on **The human body and movement in physical activity and sport** and **Socio-cultural influences and well-being in physical activity and sport**.
- External assessment on 3 practical sports and an internal coursework unit on analysis and evaluation of performance.

Polish AQA 8688

This qualification is linear. This means that students sit all the examinations at the end of the course.

Course breakdown:

Listening: examination comprising 25% of the overall mark
Speaking: non-exam assessment comprising 25% of the overall mark.
Reading: examination comprising 25% of the overall mark
Writing: examination comprising 25% of the overall mark

All elements are available at either higher or foundation levels to reflect individual levels of attainment (Foundation – grade 1 to 5; Higher – grade 4 to 9)

Units of study:

Over the two years, students develop their understanding, grammatical knowledge, reading, writing, listening and speaking skills of the Polish language. Students are expected to understand and provide information and opinions about these themes relating to their own experiences and those of other people, including people in countries/communities where Polish is spoken:

- **Identity and culture** (family and friends; technology; free time activities; customs/festivals in French speaking countries)
- **Local, national, international and global areas of interest** (home, town, region; social issues; global issues; travel and tourism)
- **Current and future study and employment** (studies; life at school; education post - 16; jobs, career choices and ambitions)

Equipment Required

A Polish-English / English-Polish dictionary, a Polish grammar book is desired.

Homework

Formal homework will be set once per week and will be supplemented by preparation or research task as required.

Mock examinations across four skills (Listening, Speaking, Reading, Writing):

These mocks will be scheduled to take place at appropriate times during the course, and in line with the school assessment calendar. They will be preceded by in-class revision and, where necessary, after school preparation opportunities. Further details will be forwarded to parents as appropriate.

Revision

Learning a language is a life-time commitment. A commitment to learning vocabulary and grammar in detail and accurately is essential and a 'little and often' approach supplemented by focused, intensive revision at key points is the most successful way forward.

Key resources and opportunities, for all students, including the Gifted and Talented

- Clear learning objectives with differentiated outcomes
- Extension activities for key skills
- Manipulation and application of language in a variety of settings
- Developing pupils' skills in constructing complex sentences
- Use of modelling and exemplar work
- Consolidation of vocabulary and linguistic concepts across the four skills areas.
- Developing skills in using vocabulary to apply within defined contexts

Sociology

WJEC Eduqas

Studying GCSE Sociology gives students valuable knowledge and understanding of today's society through studying families, education, crime and deviance and social stratification.

Sociology is the study of human society; it draws on a variety of viewpoints in order to understand the social world around us. You will learn about how society shapes people's ideas and behaviour

and you will relate this to your own experiences of living in British society. You will also study how societies change over time and how society differs across cultures.



We will answer important questions that affect our society.

- Why do some pupils do better in school than others?
- Why do men continue to earn more money than women?
- How are ethnic minorities presented in films?
- Why are boys more likely to commit crimes than girls?
- Who makes the law and who benefits from it?

What will I study?

- The sociology of families
- The sociology of education
- Social theory and methodology
- Crime and deviance
- Social class

Why choose Sociology?

This subject will enable you to move on to further study in the Sixth Form at A level. It also provides a good foundation for further study at university. Career opportunities include journalism, teaching and social work – but in reality, the options are endless. Almost all careers where you will be dealing with people would benefit from the study of Sociology.



How will it be assessed?

At the end of the course, you will take two written examinations. Each exam lasts 1 hour 45 minutes and accounts for 50% of the course assessment. To be successful you need to be able to learn and retain a wide range of specialist information and be able to write high quality analytical and evaluative answers, drawing on your written English skills.

Spanish

AQA 8692

What will I study?

You will develop your grammatical knowledge and your ability to understand information and converse about a wide range of everyday topics. Lessons and other learning activities will be structured to develop the four key skills of reading, writing, listening and speaking.

What topics will I learn about?

The new GCSE course develops your knowledge and your ability to understand, converse, read and write about key areas of interest to young people and builds upon learning at Key Stage 3. The three themes on which the assessments are based are:

- **Theme 1:** People and lifestyle

Theme 1 covers the following three topics:

- **Topic 1:** Identity and relationships with others
- **Topic 2:** Healthy living and lifestyle
- **Topic 3:** Education and work

- **Theme 2:** Popular culture

-

Theme 2 covers the following three topics:

- **Topic 1:** Free-time activities
- **Topic 2:** Customs, festivals and celebrations
- **Topic 3:** Celebrity culture

- **Theme 3:** Communication and the world around us

Theme 3 covers the following three topics:

- **Topic 1:** Travel and tourism, including places of interest
- **Topic 2:** Media and technology
- **Topic 3:** The environment and where people live

How will I study?

Lessons will be taught using a variety of teaching and learning strategies to engage and motivate learners and ensure good progress. In addition, off-timetable activities will be scheduled, where appropriate, to develop specific knowledge and skills and to allow pupils to work together to apply their learning to real-life settings. Regular informal and formal assessments will guide and personalise teaching and learning to maximise attainment.

How will it be assessed?

In the new GCSE, students must take all four examination papers at the same tier. GCSE Spanish has a Foundation Tier (grade 1-5) and a Higher Tier (grade 5-9). This qualification is linear. This means that students sit all their examinations at the end of the course.

Paper 1 : Listening
<p>What's assessed</p> <ul style="list-style-type: none">• Understanding and responding to spoken extracts comprising the defined vocabulary and grammar for each tier• Dictation of short, spoken extracts
<p>How it's assessed</p> <ul style="list-style-type: none">• Written exam: 35 minutes (Foundation tier), 45 minutes (Higher tier)• 40 marks (Foundation tier), 50 marks (Higher tier)• 25% of GCSE <p>Recording controlled by the invigilator with built-in repetitions and pauses.</p> <p>Each exam includes 5 minutes' reading time at the start of the question paper before the listening material is played and 2 minutes at the end of the recording for students to check their work.</p>
<p>Questions</p> <ul style="list-style-type: none">• Section A – listening comprehension questions in English, to be answered in English or non-verbally (32 marks at Foundation tier and 40 marks at Higher tier)• Section B – dictation where students transcribe short sentences, including a small number of words from outside the prescribed vocabulary list (8 marks at Foundation tier and 10 marks at Higher tier)

Paper 2 : Speaking
<p>What's assessed</p> <ul style="list-style-type: none">• Speaking using clear and comprehensible language to undertake a Role-play• Carry out a Reading aloud task• Talk about visual stimuli
<p>How it's assessed</p> <ul style="list-style-type: none">• Non-exam assessment (NEA)• 7–9 minutes (Foundation tier) + 15 minutes' supervised preparation time• 10–12 minutes (Higher tier) + 15 minutes' supervised preparation time• 50 marks (for each of Foundation tier and Higher tier)• 25% of GCSE

Questions

The format is the same at Foundation tier and Higher tier, but with different stimulus materials for the Role-play and the Reading aloud task. For the Photo card task, the same photos are used at both tiers.

- Role-play – 10 marks (recommended to last between 1 and 1.5 minutes at both tiers)
- Reading aloud task and short conversation – 15 marks (recommended to last in total between 2 and 2.5 minutes at Foundation tier and between 3 and 3.5 minutes at Higher tier)
- Reading aloud task: minimum 35 words of text at Foundation tier and 50 words at Higher tier
- Short unprepared conversation
- Photo card discussion – 25 marks (recommended to last between 4 and 5 minutes in total at Foundation tier, and between 6 and 7 minutes in total at Higher tier)
- Response to the content of the photos on the card (recommended to last approximately 1 minute at Foundation tier and approximately 1.5 minutes at Higher tier)
- Unprepared conversation (recommended to last between 3 and 4 minutes at Foundation tier and between 4.5 and 5.5 minutes at Higher tier)

Paper 3 : Reading

What's assessed

- Understanding and responding to written texts which focus predominantly on the vocabulary and grammar at each tier
- Inferring plausible meanings of single words when they are embedded in written sentences
- Translating from Spanish into English

How it's assessed

- Written exam: 45 minutes (Foundation tier), 1 hour (Higher tier)
- 50 marks (for each of Foundation tier and Higher tier)
- 25% of GCSE

Questions

- Section A – reading comprehension questions in English, to be answered in English or non-verbally (40 marks)
- Section B – translation from Spanish into English, minimum of 35 words at Foundation tier and 50 words at Higher tier (10 marks)

Paper 4 : Writing

What's assessed

- Writing text in the language in a lexically and grammatically accurate way in response to simple and familiar stimuli
- Translating from English into Spanish

How it's assessed

- Written exam: 1 hour 10 minutes (Foundation tier), 1 hour 15 minutes (Higher tier)
- 50 marks (for each of Foundation tier and Higher tier)
- 25% of GCSE

Questions

Foundation tier

- Question 1 – student produces five short sentences in response to a photo (10 marks)
- Question 2 – student produces a short piece of writing in response to five compulsory bullet points, approximately 50 words in total (10 marks)
- Question 3 – student completes five short grammar tasks (5 marks)
- Question 4 – translation of sentences from English into Spanish, minimum 35 words in total (10 marks)
- Question 5 (overlap question) – student produces a piece of writing in response to three compulsory bullet points, approximately 90 words in total. There is a choice from two questions (15 marks)

Higher tier

- Question 1 – translation of sentences from English into Spanish, minimum 50 words in total (10 marks)
- Question 2 (overlap question) – student produces a piece of writing in response to three compulsory bullet points, approximately 90 words in total. There is a choice from two questions (15 marks)
- Question 3 – open-ended writing task (student responds to two bullets, producing approximately 150 words in total). There is a choice from two questions (25 marks)

-

Key resources and opportunities, for all students, including the Gifted and Talented

- Clear learning objectives with differentiated outcomes
- Extension activities for key skills
- Manipulation and application of language in a variety of settings
- Developing pupils' skills in constructing complex sentences
- Use of modelling and exemplar work
- Consolidation of vocabulary and linguistic concepts across the four skills areas
- Developing skills in using vocabulary to apply within defined contexts

OCR Cambridge National in Sport Studies Level 1/2

What will I study?

- Outdoor and Adventurous activities
- Positives and Negatives of being physically active
- Writing a sports development plan
- Practical content of improving in sport
- Technology in sport
- History of competition and the Olympics
- Goal setting
- Participation in sport
- Commercialisation
- Ethics in sport
- Drugs in sport
- Violence in sport
- Health, fitness and well being
- Diet and nutrition
- Outdoor and Adventurous activity workshop



How will I study?

You will have **five** lessons of PE

- 2 x Practical lesson
- 3 x Theory lessons

How will it be assessed?

You will be assessed through demonstrating your knowledge of the theory and performance skills in both non-examined assessment (NEA) and through examinations.

- One external exam on contemporary issues in sport.
- Two internal coursework units. One on performance and leadership in sport and the other is on increasing awareness outdoor and adventurous activities.
 - Feedback physical activity in the UL
 - Participation in sport
 - Commercialisation
 - Ethics in sport

Statistics

Edexcel 1ST0



What will I study?

The assessments will cover the following content headings:

- Collection of data
- Processing, representing, and analysing data
- Probability

Statistics initially builds on many of the skills studied in key stage 3 and GCSE mathematics but takes these mathematical ideas further seeking to develop an understanding of their uses. Many new skills and statistical methods are introduced and applied to real world situations, including the communication of statistical findings.

It complements subjects such as biology, geography and business at GCSE, and is very useful for anyone thinking about taking mathematics, further mathematics, psychology, sociology, or any of the sciences at A Level.

How will I study?

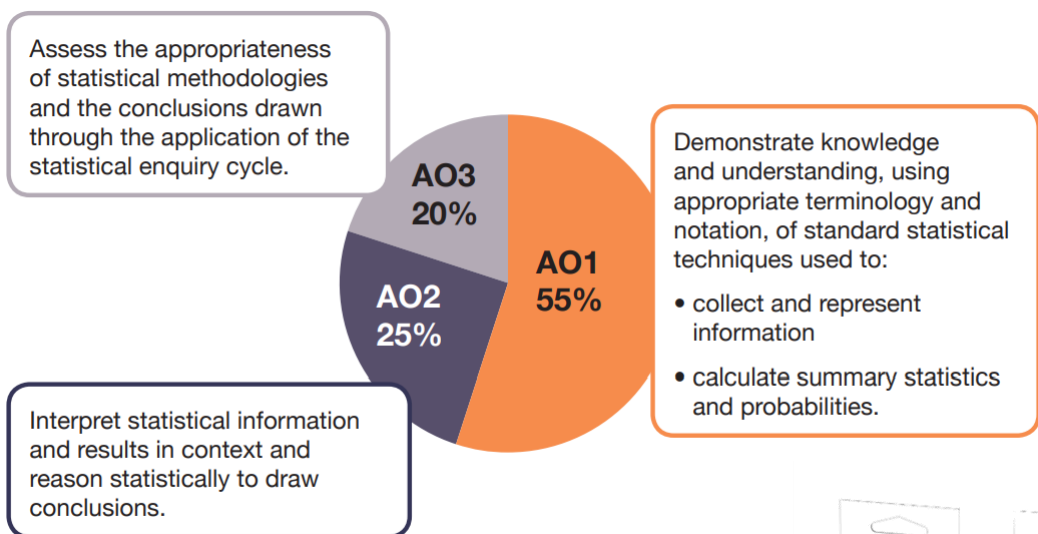
There is an overlap of skills between GCSE statistics and mathematics, so studying GCSE statistics will help your GCSE mathematics whilst providing a deeper understanding of statistics. Understanding what statistics are telling you, how they are communicated, particularly the use and potential misuse, is also a vital life skill.

Students in set 1 will study GCSE statistics in their mathematics lessons alongside the mathematics curriculum.

How will it be assessed?

Two written papers each of which contributes equally to the final grade

- Exam board is Pearson Edexcel
- Higher Tier grades 4-9 available (grade 3 may be allowed)
- Each paper 1 hour, 30 minutes.
- Each paper is 80 marks
- The papers contain short, medium and extended response questions.
- Calculators may be used in both examinations



What Equipment do I need?

- Mathematics set including:
 - Ruler
 - Pair of Compasses
 - Protractor
- Scientific Calculator: Casio FX83GT CW, FX85GT CW or FX991 CW



The Sixth Form

It is also useful at this time to consider what is on offer with respect to further education. In our Sixth Form, students can enjoy the benefits of an extensive range of A Level and BTEC courses, as well as the prestigious Extended Project qualification. As a standalone Sixth Form we are offering new and exciting courses that will broaden and develop students who join us in a way they may never have thought possible!

We have outstanding facilities for our students to use during and after the school day. We have ICT access for all, allocated study areas for individual and group work and plenty of resources for socialising, including table football, pool table and table tennis. We have four designated rooms for our Sixth Form that shows our commitment to providing an excellent environment for students to progress in their studies and lives.

Our Sixth Form offers the ideal blend of broad curriculum, excellent facilities, and a friendly, challenging environment. It is big enough to provide for students' needs but small enough to meet them through knowing the individual. A full transition programme begins in Year 11 and features Open Evening, Taster Day, individual interviews, a 'speed-dating-style' Q and A session, Higher Education Evening and two full days of transition group activities, including the London Challenge trip!

A Levels and BTEC courses currently on offer are listed below.

A Level

Art (Including Photography)
Biology
Business
Chemistry
Design and Technology
Drama & Theatre
English Literature
English Language
French
Geography
History

Maths & Further Maths
Media
Music
Physical Education
Philosophy & Ethics
Physics
Polish
Politics
Psychology
Sociology

BTEC

Health and Social Care
Sport
Travel and Tourism
Science
Player & Coach Development

- Football
- Rugby

